

BNC Conn. Series

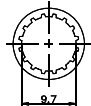
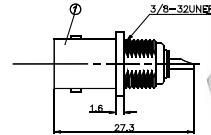
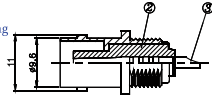
Material & Finish

Body: Zinc Alloy Nickel Plating

Insulator: DELRIN

Center Contact: Phosphor Bronze / Gold Plating

Mounting Post: Phosphor Bronze / Tin Plating



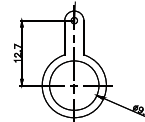
④ LOCK WASHER



③ HEX. NUT



RECOMMENDED MOUNTING HOLE



⑦ SOLDER TAG

Part No.: **BNC001-F□GW-L**

5:50Ω 7:75Ω

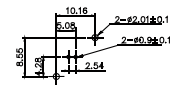
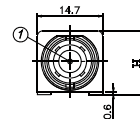
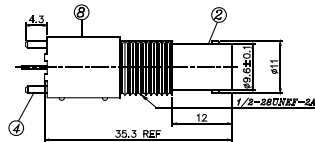
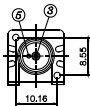
Material & Finish

Body: Zinc Alloy Nickel Plating

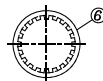
Insulator: PBT

Center Contact: Phosphor Bronze / Gold Plating

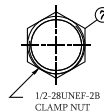
Mounting Post: Phosphor Bronze / Tin Plating



RECOMMENDED PC BOARD LAYOUT
WITHOUT MOUNTING POSTS



LOCK WASHER



1/2-28UNEF-2B
CLAMP NUT

RECOMMENDED MOUNTING HOLE
MAXIMUM PANEL THICKNESS: 6.6MM

Part No.: **BNC005-F□GW-L**

5:50Ω 7:75Ω

2:H=13.16mm
3:H=15.8mm