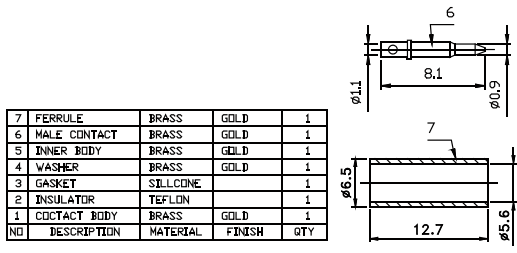
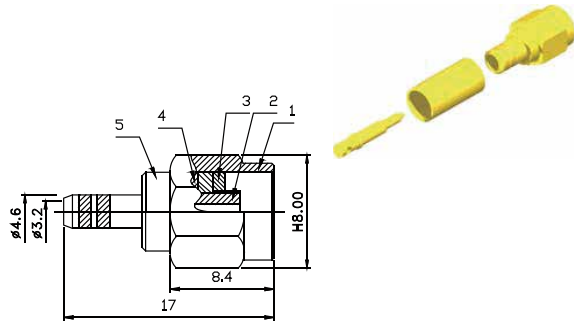


SMA Conn. Series

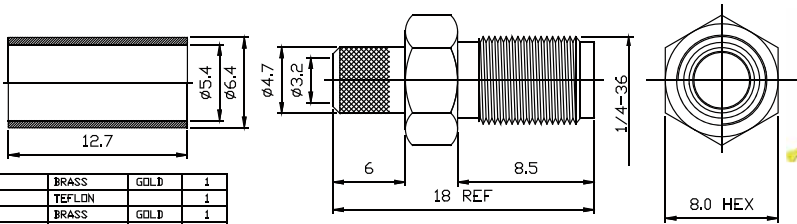


7	FERRULE	BRASS	GOLD	1
6	MALE CONTACT	BRASS	GOLD	1
5	INNER BODY	BRASS	GOLD	1
4	WASHER	BRASS	GOLD	1
3	GASKET	SILICONE		1
2	INSULATOR	TEFLON		1
1	CONTACT BODY	BRASS	GOLD	1
NO	DESCRIPTION	MATERIAL	FINISH	QTY

IMPEDANCE	50/75 OHM
FREQUENCY	0-12 GHz
DIELECTRIC WITHSTANDING VOLTAGE 50 Hz RMS	1000V
WORKING VOLTAGE DC	500V
INSULATION RESISTANCE	5000 MEGOHMS MIN
CONTACT RESISTANCE	INNER CONDUCTOR ≤ 3 MILLIOHMS OUTER CONDUCTOR ≤ 0.5 MILLIOHMS
INSERTION LOSS (dB MAX.)	STRAIGHT CONNECTOR 15 dB MAX. AT 1.0GHz RIGHT ANGLE CONNECTOR 30 dB MAX. AT 1.0GHz



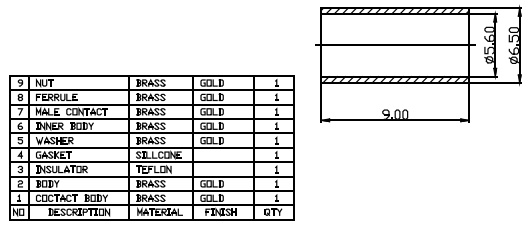
Part No.:SMA001-M GW-L
5:50Ω 7:75Ω



5	FERRULE	BRASS	GOLD	1
4	DIELECTRIC	TEFLON		1
3	FIN	BRASS	GOLD	1
2	BODY	BRASS	GOLD	1
1	BODY	BRASS	GOLD	1
NO	DESCRIPTION	MATERIAL	FINISH	QTY

IMPEDANCE	50/75 OHM
FREQUENCY	0-12 GHz
DIELECTRIC WITHSTANDING VOLTAGE 50 Hz RMS	1000V
WORKING VOLTAGE DC	500V
INSULATION RESISTANCE	5000 MEGOHMS MIN
CONTACT RESISTANCE	INNER CONDUCTOR ≤ 3 MILLIOHMS OUTER CONDUCTOR ≤ 0.5 MILLIOHMS
INSERTION LOSS (dB MAX.)	STRAIGHT CONNECTOR 15 dB MAX. AT 1.0GHz RIGHT ANGLE CONNECTOR 30 dB MAX. AT 1.0GHz

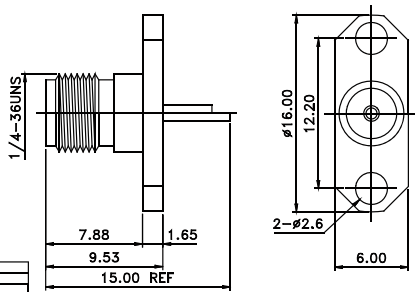
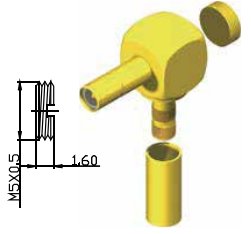
Part No.:SMA001-F GW-L
5:50Ω 7:75Ω



9	NUT	BRASS	GOLD	1
8	FERRULE	BRASS	GOLD	1
7	MALE CONTACT	BRASS	GOLD	1
6	INNER BODY	BRASS	GOLD	1
5	WASHER	BRASS	GOLD	1
4	GASKET	SILICONE		1
3	INSULATOR	TEFLON		1
2	BODY	BRASS	GOLD	1
1	CONTACT BODY	BRASS	GOLD	1
NO	DESCRIPTION	MATERIAL	FINISH	QTY

IMPEDANCE	50/75 OHM
FREQUENCY	0-12 GHz
DIELECTRIC WITHSTANDING VOLTAGE 50 Hz RMS	1000V
WORKING VOLTAGE DC	500V
INSULATION RESISTANCE	5000 MEGOHMS MIN
CONTACT RESISTANCE	INNER CONDUCTOR ≤ 3 MILLIOHMS OUTER CONDUCTOR ≤ 0.5 MILLIOHMS
INSERTION LOSS (dB MAX.)	STRAIGHT CONNECTOR 15 dB MAX. AT 1.0GHz RIGHT ANGLE CONNECTOR 30 dB MAX. AT 1.0GHz

Part No.:SMA002-M GW-L
5:50Ω 7:75Ω



3	DIELECTRIC	TEFLON		1
2	FIN	BRASS	GOLD	1
1	BODY	BRASS	NICKEL	1
NO	DESCRIPTION	MATERIAL	FINISH	QTY

IMPEDANCE	50/75 OHM
FREQUENCY	0-12 GHz
DIELECTRIC WITHSTANDING VOLTAGE 50 Hz RMS	1000V
WORKING VOLTAGE DC	500V
INSULATION RESISTANCE	5000 MEGOHMS MIN
CONTACT RESISTANCE	INNER CONDUCTOR ≤ 3 MILLIOHMS OUTER CONDUCTOR ≤ 0.5 MILLIOHMS
INSERTION LOSS (dB MAX.)	STRAIGHT CONNECTOR 15 dB MAX. AT 1.0GHz RIGHT ANGLE CONNECTOR 30 dB MAX. AT 1.0GHz

Part No.:SMA003-F GW-L
5:50Ω 7:75Ω

