

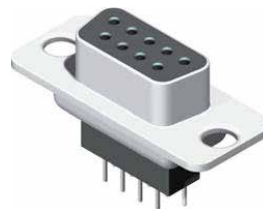
# D-SUB Elevated Dip Type

## Specifications

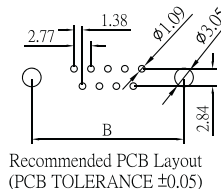
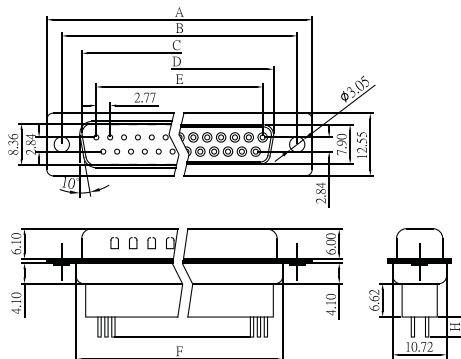
Current Rate:3 AMP  
 Insulation Resistance:1000MΩ Min.  
 Contact Resistance:20mΩ Max.  
 Dielectric Voltage:500V AC for one minute  
 Operation Temperature:-55°C to +105°C

## Material

Insulator:Polyester,UL 94V-0  
 ©Standard:PBT  
 Terminal:Copper Alloy.



No. of Contacts	Dim. A	Dim. B	Dim. C	Dim. D	Dim. E	Dim. H	Dim. I
9	30.81	24.99	16.92	11.08	19.20	3.60	11.10
15	39.14	33.32	25.50	19.39	27.51	5.40	12.70
25	53.04	47.04	38.96	33.24	41.00	7.20	14.50
37	69.32	63.50	55.42	49.86	57.71	7.20	14.50



## Order Information

