

Specifications

Current Rating: 1A AC,DC

Voltage Rating: 150V AC,DC

Temperature Range: -25°C to +85°C

Contact Resistance: 30mΩ Max

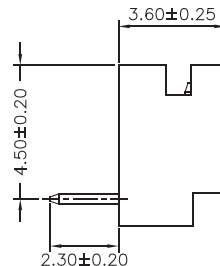
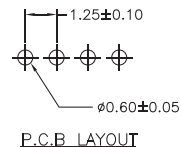
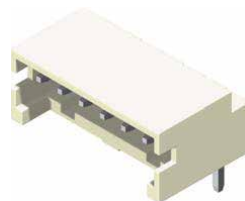
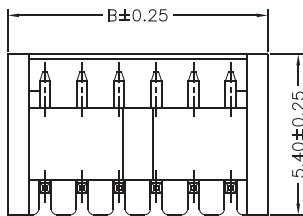
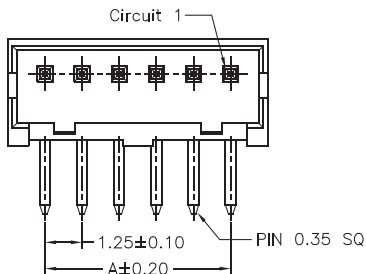
Insulation Resistance: 500MΩ Min

Withstanding Voltage: 500V AC/minute

Terminal: Brass / Tin Plated

Material: Nylon 66, UL94V-0

Part No.	Dimensions	
	A	B
1252R-02TW-L	1,25	3,75
1252R-03TW-L	2,50	5,00
1252R-04TW-L	3,75	6,25
1252R-05TW-L	5,00	7,50
1252R-06TW-L	6,25	8,75
1252R-07TW-L	7,50	10,00
1252R-08TW-L	8,75	11,25
1252R-09TW-L	10,00	12,50
1252R-10TW-L	11,25	13,75
1252R-11TW-L	12,50	15,00
1252R-12TW-L	13,75	16,25
1252R-13TW-L	15,00	17,50
1252R-14TW-L	16,25	18,75
1252R-15TW-L	17,50	20,00



Part No.:1252R-XXTW-L