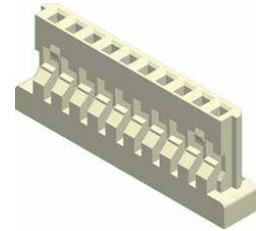
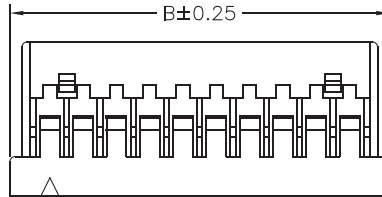
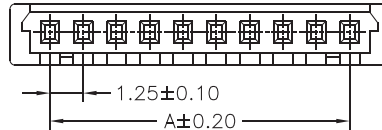


Specifications

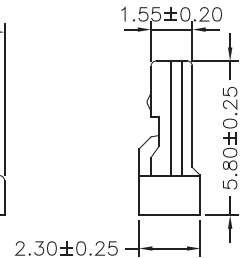
Current Rating: 1A AC,DC
Voltage Rating: 150V AC,DC
Temperature Range: -25°C to +85°C
Contact Resistance: 30mΩ Max
Insulation Resistance: 500MΩ Min
Withstanding Voltage: 500V AC/minute
Material:Nylon 66,UL94V-0



Part No.	Dimensions	
	A	B
1253H-02W-L	1.25	4.25
1253H-03W-L	2.50	5.50
1253H-04W-L	3.75	6.75
1253H-05W-L	5.00	8.00
1253H-06W-L	6.25	9.25
1253H-07W-L	7.50	10.50
1253H-08W-L	8.75	11.75
1253H-09W-L	10.00	13.00
1253H-10W-L	11.25	14.25
1253H-11W-L	12.50	15.50
1253H-12W-L	13.75	16.75
1253H-13W-L	15.00	18.00
1253H-14W-L	16.25	19.25
1253H-15W-L	17.50	20.50
1253H-20W-L	23.75	26.75
1253H-21W-L	25.00	28.00
1253H-25W-L	30.00	33.00
1253H-30W-L	36.25	39.50



Circuit 1



Part No.:1253H-XXW-L