

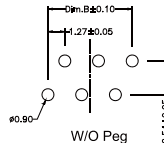
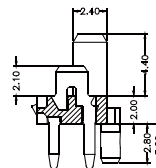
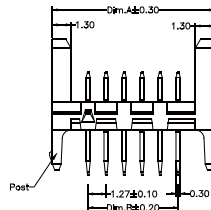
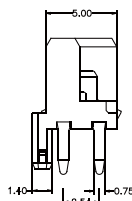
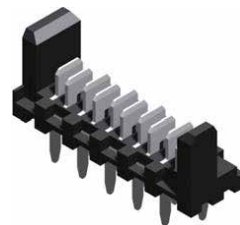
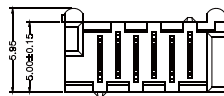
Specifications

Current Rating: 2.4A AC,DC
 Voltage Rating: 250V AC,DC
 Temperature Range: -40°C to +105°C
 Contact Resistance: 15mΩ Max
 Insulation Resistance: 1000MΩ Min
 Withstanding Voltage: 750V AC/minute
 Pin Material: Tin Plated
 Material: LCP, UL94V-0

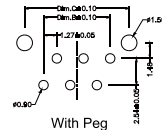
Part No.	Dimensions	
	A	B
1271S-04TB-U	8.86	3.81
1271S-06TB-U	11.40	6.35
1271S-08TB-U	13.94	8.89
1271S-10TB-U	16.48	11.43
1271S-12TB-U	19.02	13.97
1271S-14TB-U	21.56	16.51
1271S-16TB-U	24.10	19.05
1271S-18TB-U	26.64	21.59
1271S-20TB-U	29.18	24.13
1271S-22TB-U	31.72	26.67
1271S-24TB-U	34.26	29.21
1271S-26TB-U	36.80	31.75

Part No.: 1271S-**XTB** -U

O: W/O Peg
 P: WITH Peg



W/O Peg



With Peg

P C B LAYOUT