

### Specifications

Current Rating: 1A AC,DC

Voltage Rating: 100V AC,DC

Temperature Range: -25°C to +85°C

Contact Resistance: 20mΩ Max

Insulation Resistance: 500MΩ Min

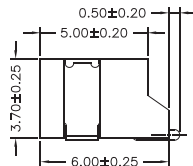
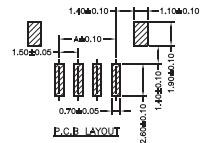
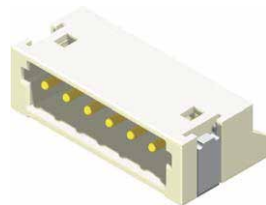
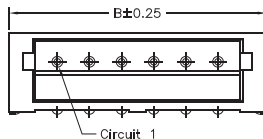
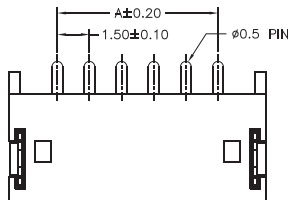
Withstanding Voltage: 500V AC/minute

Terminal: Brass / Gold Plated

Solder Tabs: Brass / Gold Plated

Material:Nylon 6T,UL94V-0

| Part No.      | Dimensions |       |
|---------------|------------|-------|
|               | A          | B     |
| 1500MR-02GW-U | 1.50       | 6.00  |
| 1500MR-03GW-U | 3.00       | 7.50  |
| 1500MR-04GW-U | 4.50       | 9.00  |
| 1500MR-05GW-U | 6.00       | 10.50 |
| 1500MR-06GW-U | 7.50       | 12.00 |
| 1500MR-07GW-U | 9.00       | 13.50 |
| 1500MR-08GW-U | 10.50      | 15.00 |
| 1500MR-09GW-U | 12.00      | 16.50 |
| 1500MR-10GW-U | 13.50      | 18.00 |
| 1500MR-11GW-U | 15.00      | 19.50 |
| 1500MR-12GW-U | 16.50      | 21.00 |
| 1500MR-13GW-U | 18.00      | 22.50 |



**Part No.:1500MR-XXGW-U**