

### Specifications

Current Rating: 1A AC,DC

Voltage Rating: 100V AC,DC

Temperature Range: -25°C to +85°C

Contact Resistance: 20mΩ Max

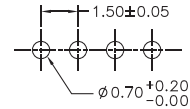
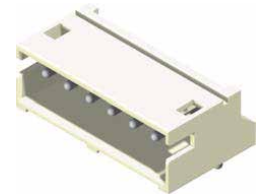
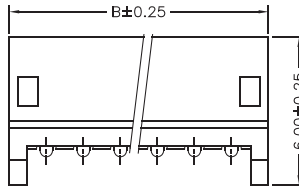
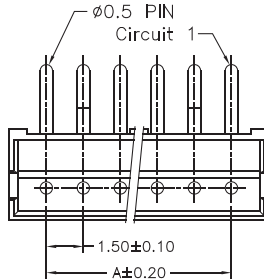
Insulation Resistance: 500M

Withstanding Voltage: 500V AC/minute

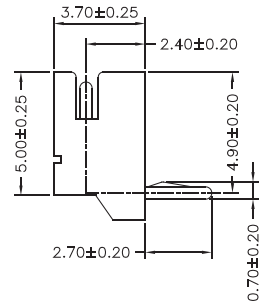
Terminal: Brass / Tin Plated

Material:Nylon 66,UL94V-0

Part No.	Dimensions	
	A	B
1500R-02TW-L	1.50	4.50
1500R-03TW-L	3.00	6.00
1500R-04TW-L	4.50	7.50
1500R-05TW-L	6.00	9.00
1500R-06TW-L	7.50	10.50
1500R-07TW-L	9.00	12.00
1500R-08TW-L	10.50	13.50
1500R-09TW-L	12.00	15.00
1500R-10TW-L	13.50	16.50
1500R-11TW-L	15.00	18.00
1500R-12TW-L	16.50	19.50
1500R-13TW-L	18.00	21.00



P.C.B. LAYOUT



**Part No.:1500R-XXTW-L**