

Specifications

Current Rating: 2A AC,DC

Voltage Rating: 100V AC,DC

Temperature Range: -25°C to +85°C

Contact Resistance: 10mΩ Max

Insulation Resistance: 1000MΩ Min

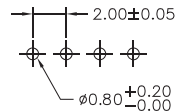
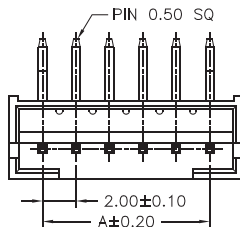
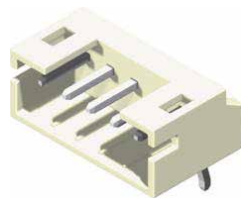
Withstanding Voltage: 800V AC/minute

Terminal: Brass / Tin Plated

Material:Nylon 66,UL94V-0

Part No.	Dimensions	
	A	B
2001R-02TW-L	2.00	6.00
2001R-03TW-L	4.00	8.00
2001R-04TW-L	6.00	10.00
2001R-05TW-L	8.00	12.00
2001R-06TW-L	10.00	14.00
2001R-07TW-L	12.00	16.00
2001R-08TW-L	14.00	18.00
2001R-09TW-L	16.00	20.00
2001R-10TW-L	18.00	22.00
2001R-11TW-L	20.00	24.00
2001R-12TW-L	22.00	26.00
2001R-13TW-L	24.00	28.00
2001R-14TW-L	26.00	30.00
2001R-15TW-L	28.00	32.00
2001R-16TW-L	30.00	34.00

Part No.:2001R-XXTW-L



P.C.B LAYOUT

