

## Specifications

Current Rating: 3A AC,DC

Voltage Rating: 250V AC,DC

Temperature Range: -25°C to +85°C

Contact Resistance: 10mΩ Max

Insulation Resistance: 1000MΩ Min

Withstanding Voltage: 800V AC/minute

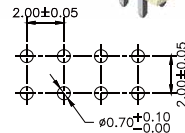
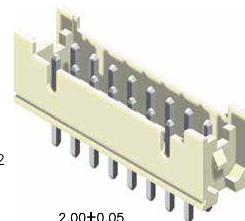
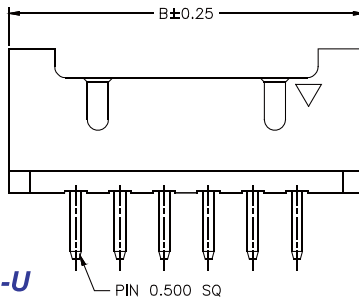
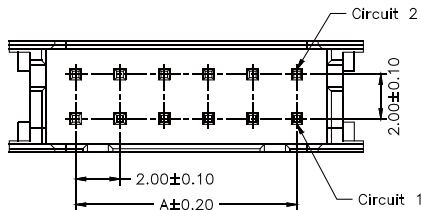
Terminal: Brass / Gold Plated

Material:Nylon 6T,UL94V-0

\*Mates With 2004H-2XXW1-L

Part No.	Dimensions	
	A	B
2004S-202GB1-U	2.00	8.00
2004S-203GB1-U	4.00	10.00
2004S-204GB1-U	6.00	12.00
2004S-205GB1-U	8.00	14.00
2004S-206GB1-U	10.00	16.00
2004S-207GB1-U	12.00	18.00
2004S-208GB1-U	14.00	20.00
2004S-209GB1-U	16.00	22.00
2004S-210GB1-U	18.00	24.00
2004S-211GB1-U	20.00	26.00
2004S-212GB1-U	22.00	28.00
2004S-213GB1-U	24.00	30.00
2004S-214GB1-U	26.00	32.00
2004S-215GB1-U	28.00	34.00
2004S-216GB1-U	30.00	36.00
2004S-217GB1-U	32.00	38.00
2004S-218GB1-U	34.00	40.00
2004S-219GB1-U	36.00	42.00
2004S-220GB1-U	38.00	44.00
2004S-222GB1-U	42.00	48.00

**Part No.:2004S-2XXGB1-U**



**P.C.B LAYOUT**

