

Specifications

Current Rating: 2A AC,DC

Voltage Rating: 125V AC,DC

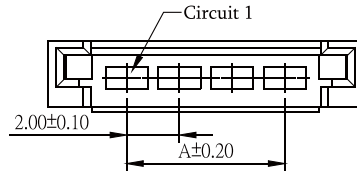
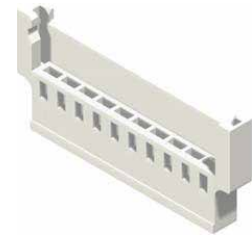
Temperature Range: -25°C to +85°C

Contact Resistance: 20mΩ Max

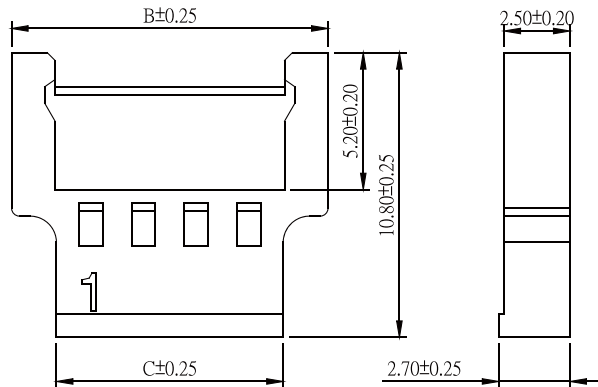
Insulation Resistance: 1000MΩ Min

Withstanding Voltage: 500V AC/minute

Material:Nylon 66,UL94V-0



Part No.	Dimensions		
	A	B	C
2009H-M02W-L	2.00	8.00	4.60
2009H-M03W-L	4.00	10.00	6.60
2009H-M04W-L	6.00	12.00	8.60
2009H-M05W-L	8.00	14.00	10.60
2009H-M06W-L	10.00	16.00	12.60
2009H-M07W-L	12.00	18.00	14.60
2009H-M08W-L	14.00	20.00	16.60
2009H-M09W-L	16.00	22.00	18.60
2009H-M10W-L	18.00	24.00	20.60
2009H-M11W-L	20.00	26.00	22.60
2009H-M12W-L	22.00	28.00	24.60
2009H-M13W-L	24.00	30.00	26.60



Part No.:2009H-MXXW-L