

### Specifications

Current Rating: 5A AC,DC

Voltage Rating: 250V AC,DC

Temperature Range: -25°C to +85°C

Contact Resistance: 10mΩ Max

Insulation Resistance: 1000MΩ Min

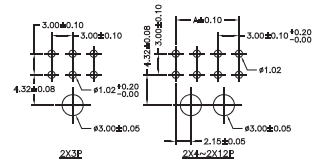
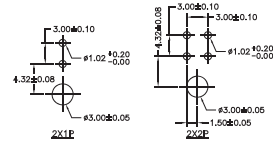
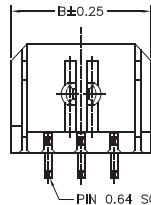
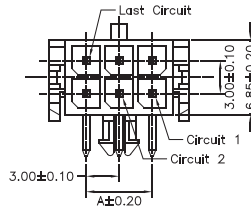
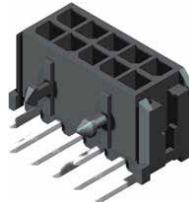
Withstanding Voltage: 1500V AC/minute

Terminal: Brass / Tin Plated

Material: PBT,UL94V-0

Part No.	Dimensions	
	A	B
3000R-201TB-L	—	6.65
3000R-202TB-L	3.00	9.65
3000R-203TB-L	6.00	12.65
3000R-204TB-L	9.00	15.65
3000R-205TB-L	12.00	18.65
3000R-206TB-L	15.00	21.65
3000R-207TB-L	18.00	24.65
3000R-208TB-L	21.00	27.65
3000R-209TB-L	24.00	30.65
3000R-210TB-L	27.00	33.65
3000R-211TB-L	30.00	36.65
3000R-212TB-L	33.00	39.65

**Part No.:3000R-2XXTB-L**



P.C.B. LAYOUT

