

Specifications

Current Rating: 1A AC,DC

Voltage Rating: 600V AC,DC

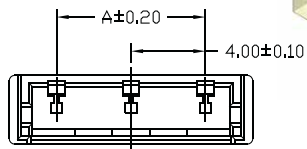
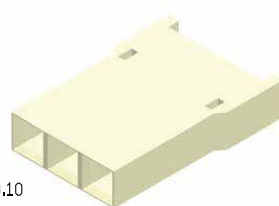
Temperature Range: -25°C to +85°C

Contact Resistance: 10mΩ Max

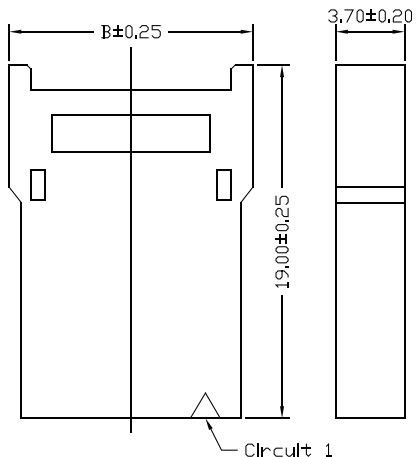
Insulation Resistance: 1000MΩ Min.

Withstanding Voltage: 1800V AC/minute

Material: Nylon 66,UL94V-0



Part No.	Dimensions	
	A	B
LCDH-M02W-L	4.00	9.10
LCDH-M03W-L	8.00	13.10
LCDH-M04W-L	12.00	17.10
LCDH-M05W-L	16.00	21.10

**Part No.:LCDH-MXXW-L**