

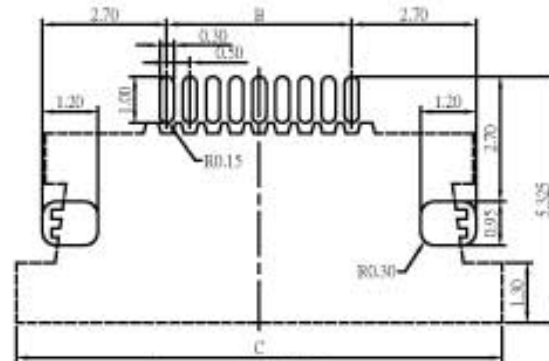
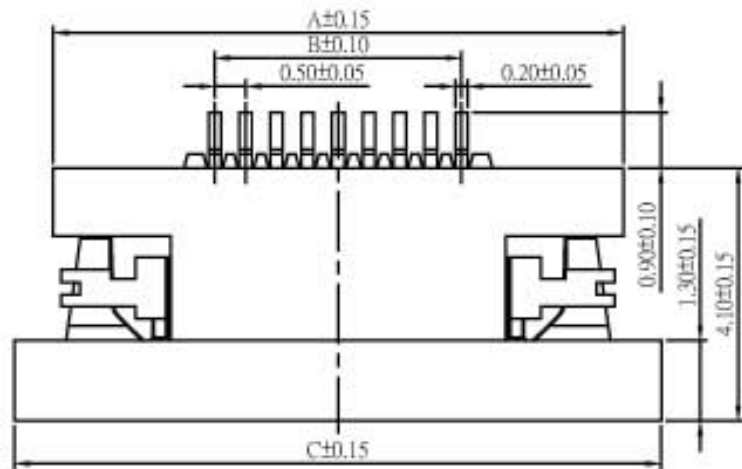
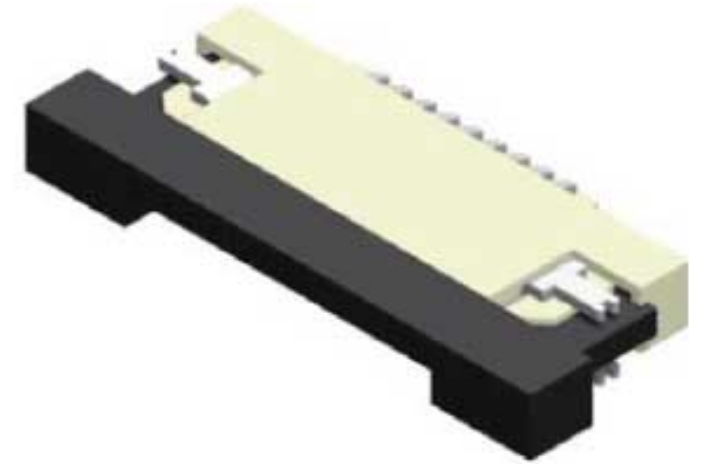
# FPC/FFC 0.5mm ZIF Slim SMT Type Side Entry

## Specifications

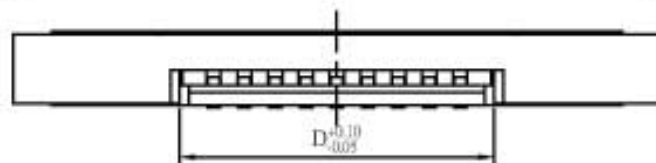
Current Rate:0.4 AMP  
 Insulation Resistance:500M $\Omega$  Min.  
 Contact Resistance:20m $\Omega$  Max.  
 Dielectric Voltage:100V AC for one minute  
 Operation Temperature:-55°C to +85°C

## Material

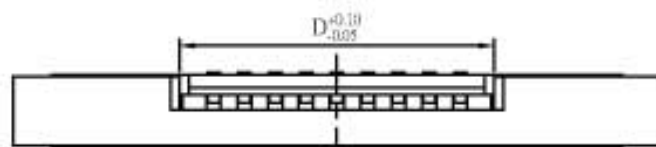
Insulator:Polyester,UL 94V-0  
 ©Standard:Nylon 46  
 Terminal:Copper Alloy  
 Plated:Tin Plated



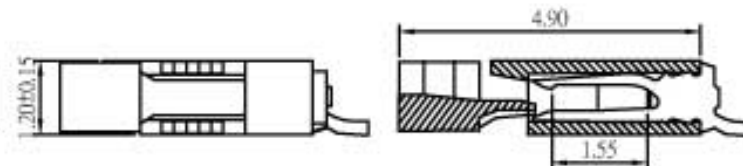
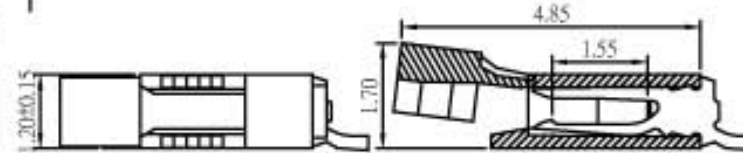
Recommended PCB Layout  
 (PCB TOLERANCE  $\pm 0.05$ )



Bottom Contact



Upper Contact



No. of Contacts	Dimensions				No. of Contacts	Dimensions			
	A	B	C	D		A	B	C	D
04	6.75	1.50	8.00	2.60	28	18.75	13.50	20.00	14.60
05	7.25	2.00	8.50	3.10	29	19.25	14.00	20.50	15.10
06	7.75	2.50	9.00	3.60	30	19.75	14.50	21.00	15.60
07	8.25	3.00	9.50	4.10	31	20.25	15.00	21.50	16.10
08	8.75	3.50	10.00	4.60	32	20.75	15.50	22.00	16.60
09	9.25	4.00	10.50	5.10	33	21.25	16.00	22.50	17.10
10	9.75	4.50	11.00	5.60	34	21.75	16.50	23.00	17.60
11	10.25	5.00	11.50	6.10	35	22.25	17.00	23.50	18.10
12	10.75	5.50	12.00	6.60	36	22.75	17.50	24.00	18.60
13	11.25	6.00	12.50	7.10	37	23.25	18.00	24.50	19.10
14	11.75	6.50	13.00	7.60	38	23.75	18.50	25.00	19.60
15	12.25	7.00	13.50	8.10	39	24.25	19.00	25.50	20.10
16	12.75	7.50	14.00	8.60	40	24.75	19.50	26.00	20.60
17	13.25	8.00	14.50	9.10	41	25.25	20.00	26.50	21.10
18	13.75	8.50	15.00	9.60	42	25.75	20.50	27.00	21.60
19	14.25	9.00	15.50	10.10	43	26.25	21.00	27.50	22.10
20	14.75	9.50	16.00	10.60	44	26.75	21.50	28.00	22.60
21	15.25	10.00	16.50	11.10	45	27.25	22.00	28.50	23.10
22	15.75	10.50	17.00	11.60	46	27.75	22.50	29.00	23.60
23	16.25	11.00	17.50	12.10	47	28.25	23.00	29.50	24.10
24	16.75	11.50	18.00	12.60	48	28.75	23.50	30.00	24.60
25	17.25	12.00	18.50	13.10	49	29.25	24.00	30.50	25.10
26	17.75	12.50	19.00	13.60	50	29.75	24.50	31.00	25.60
27	18.25	13.00	19.50	14.10					