

# Pin Header 3.96mm 1 Row H=3.18mm Straight Type

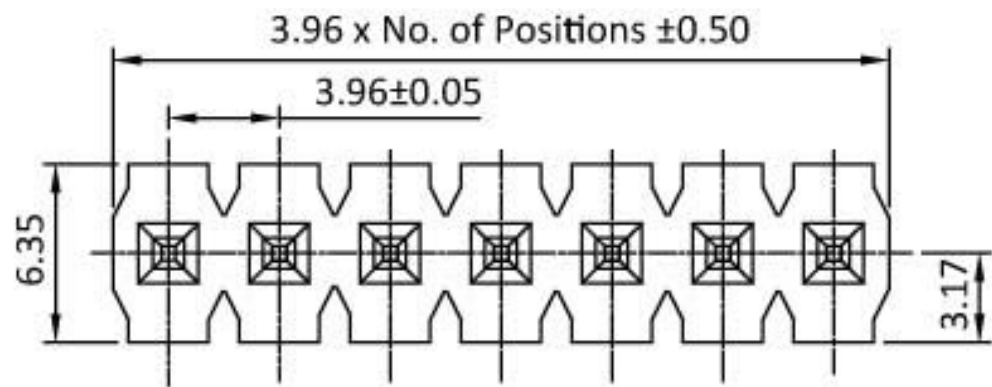
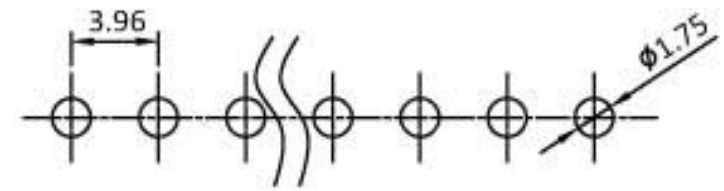
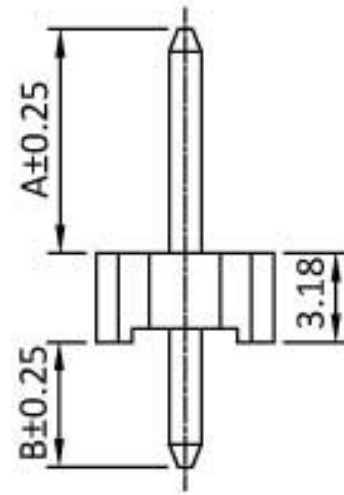
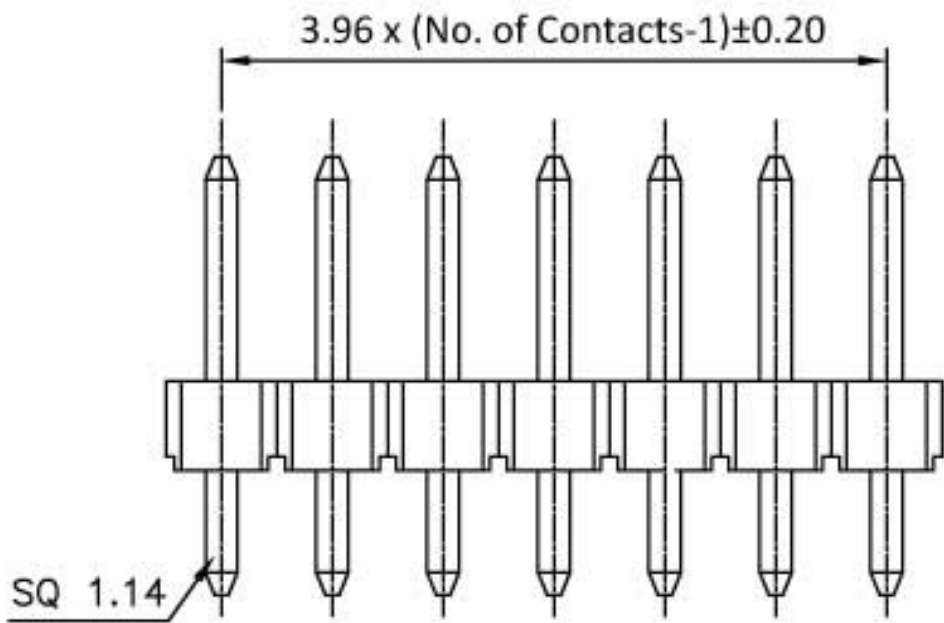
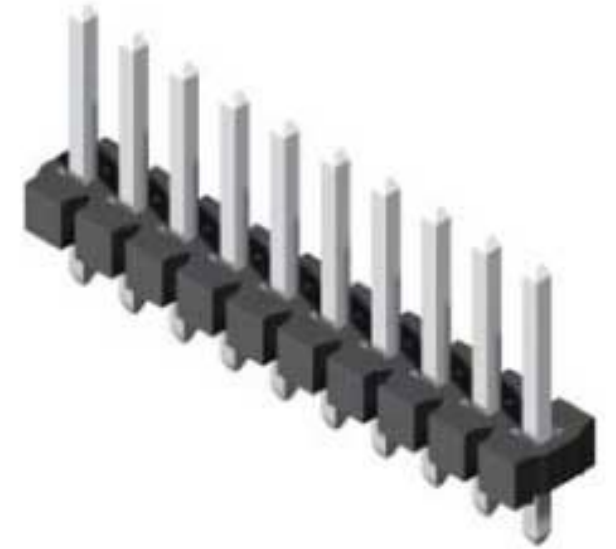


Table:

LEAD STYLE	Dimensions	
	Dim.A	Dim.B
02	11.45	4.45
03	12.70	
04	20.55	4.00
05	3.80	12.10
06	11.43	3.18



Recommended PCB Layout  
(PCB TOLERANCE  $\pm 0.05$ )