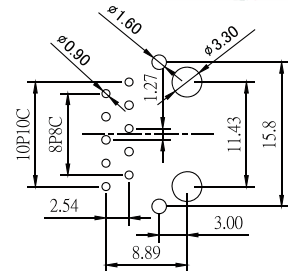
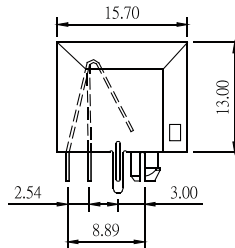
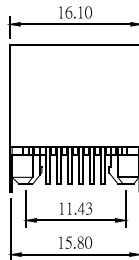
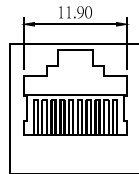
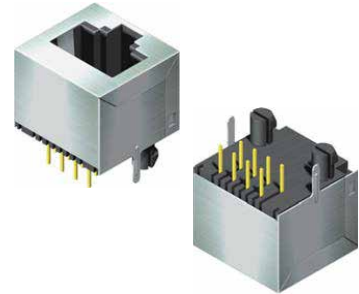


## Modular Jack Shielded Side Entry H=13.0 W=15.7

### Material&Finish

Housing:P.B.T, UL 94V-0, Black  
 Contact :0.35x0.42mm Thickness Phosphor Bronze,  
 Gold Plated Over Nickel on Contact Area,  
 Tin Plated Over Nickel on solder Area  
 Shield:Copper Plated Nickel.



Recommended PCB Layout  
 (PCB TOLERANCE ±0.05)

### Order Information

