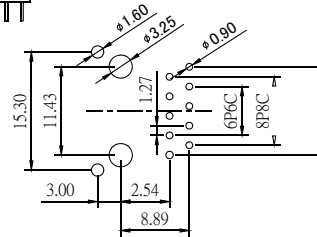
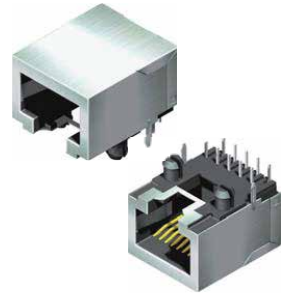
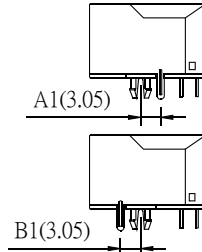
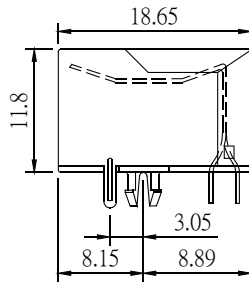
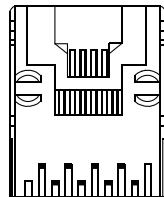
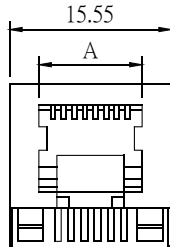


Modular Jack Shielded Side Entry H=11.8 W=18.65

Material & Finish

Housing: Glass Fiber, P.B.T, UL 94V-0, Black
 Contact :0.35mm Thickness Phosphor Bronze,
 Gold Plated Over Nickel on Contact Area.



Recommended PCB Layout
 (PCB TOLERANCE ±0.05)

Position	A	
8P(6P)	9.80	For 6P Plug
8P	11.90	For 8P Plug
10P	11.90	For 10P Plug

S 9 6 5

- X P

X C - X

X

X

-

L

Number of position
 (6P,8P,10P)

Number of contact
 (6C,8C,10C)

Gold Plating
 ©GA:6u"
 GB:15u"
 GC:30u"
 GD:50u"

B:Black Insulator

A1:3.05
 B1:3.05

L:RoHS +P.B.T